

PLATINUM SPONSORS



Associated Builders & Contractors, Inc.
Heart of America Chapter
www.abcksmo.org
816.994.5990



Associated Builders
and Contractors, Inc.

Heart of America
Chapter



EXCELLENCE IN
CONSTRUCTION
AWARDS
2017

Message from the President

"If you are going to achieve excellence in big things, you develop the habit in little matters. Excellence is not an exception, it is a prevailing attitude." --Colin Powell.

Tonight we celebrate organizations that embody this notion. Each year, members from across the Heart of America gather to celebrate excellence in safety and performance. We are honored to join with you this evening to recognize their accomplishments.

We'll begin our evening by celebrating outstanding accomplishments in safety, just as we begin each day with a commitment to creating and maintaining the highest culture of safety. Each project that we recognize tonight is the result of the hard work and dedication of numerous team members who set about each day to leave a positive mark on their project and our communities. The rewards of a successful project fill the skyline as we look over the lasting impact of what the people in this room have created. Tonight then, is simply a celebration of what you have already accomplished through your attention to big and little matters.

Thank you for joining us. Thank you for setting the standard in excellence in everything you do. May that prevailing attitude of accomplishment continue to set the tone for everything that we as an organization do.



MICHELE ROBERTS-BAUER
President, ABC Heart of America



Heart of America
Chapter

At ABC, we believe in building people through the **merit shop philosophy**: that projects and personal advancement should be awarded based on *performance, skill and achievement*.

TABLE OF CONTENTS

ORDER OF PRESENTATION	2
OFFICERS + DIRECTORS	3
EIC PROJECT ETNRY JUDGES + AWARDS COMMITTEE	4
STEP AWARD RECIPIENTS	5
ANNIVERSARY AWARD RECIPIENTS	6
EIC TOP FIELD EMPLOYEES	7
EIC PROJECT SUBMISSIONS	9
EIC SPONSORS	18

Welcoming Remarks

Chair's Gavel Exchange

Invocation

Dinner

STEP Awards

Subcontractor Chapter Safety Award

General Contractor Chapter Safety Award

Ted Anderson Superior Safety Award

Freedom Fighter Award

Excellence in Construction Awards: Subcontractors

Anniversary Celebration

Excellence in Construction Awards: General Contractors

Arthur C. Waugh Keystone Award

Subcontractor Project of the Year Award

General Contractor Project of the Year Award

2017 OFFICERS + DIRECTORS



Dusty Brown
Chair of the Board
Electrical Associates



Irma Wehmeyer
1st Vice Chair
hth companies, inc.



Preston Moore
2nd Vice Chair
Nabholz Construction



Jeff Wasinger
Secretary
HarenLaughlin Construction



Andrew Dahmer
Treasurer
Dahmer Contracting Group



Tim Paulson
Immediate Past Chair
Emery Sapp & Sons, Inc



David Anderson
Director
Crossland Construction
Co., Inc.



JoLynne Bartolotta
Director
Fogel-Anderson
Construction Co.



Mark Bessmer
Director
LBA Mechanical



Paul Cohen
Director
TRUSS



Steven Ruprecht
Director
Brown & Ruprecht



Tim Weir
Director
AMF Electric, Inc.

ABC HEART OF AMERICA STAFF



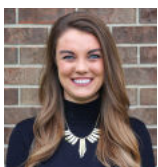
Michele Roberts-Bauer
President



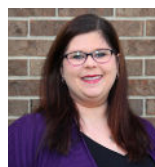
Monica Brentano
Education Director



Reed Alberg
Membership Director



Whitney Butler
*Marketing & Events
Manager*



Katie Grooms
*Education & Training
Coordinator*



Marie Orsinger
Administrative Assistant

2017 EXCELLENCE IN CONSTRUCTION PROJECT ENTRY JUDGES

Basil Alani

Special Inspection Engineer
City of Kansas City, Missouri

Mac Andrew

Executive Director of KC Chapter
National Utility Contractors
Association

Dennis Audo

Associate Professor
Pittsburg State University

Alex Callow AIA

Architect
Finkle + Williams Architecture

Steve Donner

Special Inspection Engineer
City of Kansas City, Missouri

Jim Feikert

JCCC Continuing Education
Program Director
Johnson County Community College

Mark Franzen

President
HTK Architects

David Miller

Director of Business Development &
Construction Specialist
CEO Structural Engineers

Paul Karr

Instructor, Department of Architectural
Engineering & Construction Science
Kansas State University

Oretta Smith

Executive Director
DBIA - MAR

Cale Wilson P.E.

Principal & Office Manager
Terracon Consultants, Inc.

Eric Wyancko

Development and Construction
Project Manager
copaken brooks

2017 EXCELLENCE IN CONSTRUCTION AWARDS COMMITTEE

Caitlyn Cook

Chair
Emery Sapp & Sons, Inc.

Kelsey Eckelberry

Nabholz Construction Services

Sara Freetly

candid marketing + communications

Laura Sanford

Terracon Consultants, Inc.

Laura Tyson

Shafer, Kline & Warren, Inc.

2017 HEART OF AMERICA STEP AWARD RECIPIENTS

The Safety Training and Evaluation Process (STEP) program helps your organization analyze and develop your company's safety and loss prevention program, wherever you are on the road map to world class safety performance. ABC STEP Diamond participants are 720% safer than the industry average and experience an 86% reduction in TRIR rates.

DIAMOND

Canyon Concrete, Inc.
Fogel-Anderson Construction Co.
Nabholz Construction
Shawhan Sheet Metal LLC

PLATINUM

American Boiler & Mechanical
ARCO National Construction - KC
Bart's Electric Company, Inc.
Emery Sapp & Sons, Inc.
hth companies, inc.
Industrial Construction & Engineering Co.
Killian Construction Co./KCC Contractor, Inc.
Robinson Construction

GOLD

Crossland Construction Co., Inc.
Crossland Heavy Contractors, Inc.
Division 7, Inc.
Herzog Contracting Corp.
Lee Mechanical Contractors, Inc.
Neighbors Construction Company, Inc.
Prosser Wilbert Construction, Inc.
Schultz Brothers Electric Co.
Teague Electric Construction, Inc.
Thermaltech, Inc.
Tradesmen International
Wachter, Inc.

SILVER

AMF Electric, Inc.
Chief Heating & Cooling, Inc.
Dahmer Contracting Group
Electrical Associates
Excel Constructors, Inc.
HarenLaughlin Construction
LBA Mechanical
Mega Industries Corporation

2017 HEART OF AMERICA ANNIVERSARY AWARDS

35-YEAR ANNIVERSARY

Lockton Companies
Teague Electric Construction, Inc.

30-YEAR ANNIVERSARY

Century Concrete, Inc.

25-YEAR ANNIVERSARY

Herbster Hellweg® Painting Co.
Lee Mechanical Contractors, Inc.

20-YEAR ANNIVERSARY

Ace Electric - Jones Company, Inc.
Al J. Mueller Construction Co.
Schutte Lumber Company
Strickland Construction Company
Torgeson Electric Company

15-YEAR ANNIVERSARY

Boone Brothers Roofing, Inc.
Brinton Electric Co., Inc.
Eiberger Construction, Inc.
K G Moats and Sons Engineering Inc.
K.D. Christian Construction, Inc.
Palmer Electric Company
Rodina Company, Inc.
Spacemark, Inc.
St. Louis Paving, Inc.
Western Enterprise, Inc.

10-YEAR ANNIVERSARY

Crossland Construction Co., Inc.
Electrical Associates
KASA Electric
Pro Circuit, Inc.
S & S Electrical Contracting, LLC

5-YEAR ANNIVERSARY

2Point Construction Co., LLC
Brauer Supply Company
Clearview Enterprises, LLC
DeVault Construction
DG Electric
GMP Plumbing
Gold Mechanical, Inc
Killian Construction Co./KCC Contractor, Inc.
Mid-Continental Restoration Co., Inc
MJC Electric Co. LLC
Progressive Environmental & Safety
Sunshine Electronic Display

AWARD CATEGORIES

2017 HEART OF AMERICA EXCELLENCE IN CONSTRUCTION TOP FIELD EMPLOYEES

SUBCONTRACTORS

Electrical Commercial/Institutional - Under \$250,000
Electrical Commercial/Institutional - Over \$750,000
Electrical Industrial - Over \$750,000
Interior/Exterior
Mechanical Commercial/Institutional - Under \$250,000
Mechanical Industrial - Under \$750,000
Mechanical Industrial - Over \$750,000
Specialty

GENERAL CONTRACTORS

Commercial - \$5-\$10 Million
Commercial - Over \$10 Million
Healthcare
Historical Renovation/Restoration
Industrial - Under \$5 Million
Infrastructure: Heavy
Institutional - Under \$5 Million
Institutional - Over \$5 Million
Public Works/Environmental
Specialty

American Boiler & Mechanical

Center Ethanol, 9 Cooling Tower Install
Asmir Osmanovic, *Project Lead*
Dean Stock, *Structural Lead*

American Boiler & Mechanical

Orizon Aero
Darrel Barber, *Pipefitter Foreman*
Dale Reed, *Pipefitter*

Crossland Construction Company, Inc.

Oxford Grand at Shoal Creek Senior Living Facility
Justin Hunting, *Project Manager*
Joe Reischman, *Superintendent*

Crossland Construction Company, Inc.

Raymore-Peculiar High School Addition and Renovation
Tim Carson, *Superintendent*
Nick Kelley, *Superintendent*

Emery Sapp & Sons, Inc.

South Lawrence Trafficway
Trampus Tuggle, *Superintendent*
Brent Ponder, *Superintendent*

Emery Sapp & Sons, Inc.

Turner Commerce Center & Amazon Fulfillment Center
Jake Barnes, *Superintendent*
Hal Brenton, *Superintendent*

Excel Constructors, Inc.

The Sheridan at Overland Park
Darin Hanzlick, *Superintendent*
Aaron Clark, *Assistant Superintendent*

Excel Constructors, Inc.

VISTA 154 at Ironhorse
Daniel Hanzlick, *Superintendent*
Brenden Finnell, *Carpenter*

Fogel-Anderson Construction Co.

Cosentinos Market at Bluhawk
Greg Tate, *Project Manager*
Bruce Rebarckek, *Superintendent*

Fogel-Anderson Construction Co.

Journey Church International
Sheldon Simmermon, *Project Manager*
Casey Williams, *Superintendent*

HarenLaughlin Construction

Pickwick Renovation
Berdie Bergsieker, *Superintendent*
Rueben Hamman, *Project Manager*

Herzog Contracting Corp.

J112213 Route I-29 Resurfacing
Andrew and Buchanan Counties
Jeremy Hoffman, *Quality Manager*
Bryan Jones, *Project Manager*

hth companies, inc.

Owens Corning Thermafiber Project
Don Curry, *Superintendent*
Mike Young, *Superintendent*

JPI Glass

KU Health Education Center
Todd Nelson, *Senior Foreman*
Gilbert Salyer, *Foreman*

Lee Mechanical Contractors, Inc.

Argos Harleyville - Clinker Cooler Bag Filter
Zachary Sutherland, *Project Manager*
Dallas Cissell, *Mechanical Superintendent*

Lee Mechanical Contractors, Inc.

ProPortion Foods
Jeremy Midkiff, *Superintendent*
Manuel Martinez, *Foreman*

Mega Industries Corporation

Nelson Complex
WWTP Handling Improvements
Ryan Mills, *Superintendent*
Miles Miller, *Superintendent*

Mega Industries Corporation

FOTZ - Goat & Donkey Exhibit Renovation
Randy Greene, *Superintendent*
Andrew Richardson, *Superintendent*

Mike Hagen Electric, Inc.

Kansas City Power & Light Building
Mike Hagen, *Superintendent/Project Manager*
Bill Tabb, *Superintendent*

Nabholz Construction

Hays Med Center - First Floor Lobby & Surgery Waiting Remodel
Jon Sealine, *Superintendent*
Anthony Cannata, *Project Engineer*

Neighbors Construction Co., Inc.

Kansas City Power & Light - North Building
Nick Sobba, *Project Manager*
Kent Busch, *Project Superintendent*

Neighbors Construction Co., Inc.

Kansas City Power & Light - Tower Building
Aaron Neighbors, *Project Manager*
Jon Stratton, *Superintendent*

Straub Construction Company

University Academy Athletic Field
Jeff Walters, *Superintendent*

Teague Electric Construction, Inc.

Veterans Outreach Center
Brent Smith, *Project Estimator/Manager*
Jason Fales, *Project Foreman*

Thermaltech, Inc.

University of Missouri Columbia
Softball Stadium
Anthony Ross, *Foreman*

Wachter, Inc.

Midwest Farmers Coop Rail Shuttle Facility
Lonnie Morris, II, *Project Superintendent*
Zachary Wilson, *Project Foreman*

Westhues Electric, Inc.

Lenexa Civic Center
Chris Vandevort, *Project Superintendent*
Chris Holden, *Foreman*

ARGOS HARLEYVILLE – CLINKER COOLER BAG FILTER

Lee Mechanical Contractors, Inc.

HARLEYVILLE, SC

Lee Mechanical was contracted for the installation of a new clinker cooler filter bag house at the Argos Harleyville cement plant. The plant had to upgrade their current exhaust system to meet the new emissions standards set by the NESHAP section of the Environmental Protection Agency's Clean Air Act. The project started in early March of 2016 and had to be on line by the end of the year. The project consisted of a new structure for the baghouse to sit on, new duct work that would tie into the existing system and a new exhaust stack to release the emissions. Lee Mechanical was also contracted for the fabrication and supply of the process duct work and the structural steel. The baghouse parts and components were supplied by Shoych Scheuch, a baghouse supply company based in Austria.



CENTER ETHANOL, 9 COOLING TOWER INSTALL

American Boiler & Mechanical

SAUGET, IL

Center Ethanol's plant in Illinois is operational about 350 days per year on a 24 hour basis. The plant produces approximately 54 million gallons of ethanol per year. In May of 2017, Center Ethanol started discussions for installing nine new cooling towers to take the place of the existing seven that were at one time running the plant. Over time they had lost four of the seven towers and were running on only three which were leaking excessively in the work area creating wet and dangerous work conditions. Additionally, the new 9 towers would not fit in the existing space of the original 7 so a tower reconfiguration was required without any changes to the contract. Due to the worksite conditions the only good place to work was a parking lot ¼ mile away. This became the staging area for all deliveries and main piping work. Given less than eight weeks to complete 2,779 man hours' worth of work, American Boiler and Mechanical was able to overcome material, site work, and build out challenges to be ready two days ahead of schedule.



COSENTINOS MARKET AT BLUHAWK

Fogel-Anderson Construction Co.

OVERLAND PARK, KS

The Cosentinos Market at Bluhawk anchors the first phase of the Bluhawk mixed use development in Overland Park. The project was developed by Price Brothers as a Build-to-Suit for Cosentinos and Associated Wholesale Grocers. The new store is the nicest grocery store ever built in the Kansas City market, with high end finishes throughout the store that define the individual sections of the market. Fogel-Anderson Construction worked closely with Slaggie Architects to match the exterior to the store the other retail buildings that make up the Bluhawk Marketplace. The interior layout of the store had to match the changing shopping patterns of Cosentinos' customers while establishing a high standard of finish for the rest of the Bluhawk mixed-use development.



MEGA INDUSTRIES CORPORATION FOTZ - Goat & Donkey Exhibit Renovation

KANSAS CITY, MO

The Goat and Donkey Exhibit Renovation project was awarded to Mega Industries Corporation with a contract amount of \$514,600.00. The renovation consisted of removing the existing Goat and Donkey Exhibit and constructing a new exhibit to house the goats and donkeys in a concept created from the children's book "Three Billy Goats Gruff". The project consisted of two goat barns, one donkey barn, new concession building, walking paths, shade structure, two hand washing stations, all new custom built fence, two bridges, two overlook decks, automatic gate, and all new utilities. The project required strict goals to be met to include MBE 22%, WBE 8%, and LBE 15%. Mega Industries was able to meet these goals as well as complete the project two weeks early despite beginning two weeks late to allow for Halloween Events that had been planned by the Zoo.



NABHOLZ CONSTRUCTION Hays Med Center First Floor Lobby & Surgery Waiting Remodel

HAYS, KS

Many projects have unique characteristics; occasionally a particular uniqueness about a project will make it stand out above all others. At Hays Medical Center, this uniqueness is an innovative and multidimensional staircase. The staircase's intermingling of materials rise up from a stone covered platform accentuating its oblique design. Outlining the staircase is a structural glass railing system supported with machined stainless grommets, also used to attach a stainless railing, custom fitted to make an elegant and functional handhold for pedestrians. This work was performed at the entrance of the main lobby at Hays Medical Center. Due to innovation of the temporary handrail and coordination of construction activities, the entrance remained opened to patients, staff and visitors seven days a week throughout the majority of the project, with no accidents.



J112213 ROUTE I-29 RESURFACING ANDREW AND BUCHANAN COUNTIES Herzog Contracting Corp.

SAINT JOSEPH, MO

This project included 13.5 miles of 2.75" Superpave on Interstate 29, a key highway corridor running through Andrew and Buchanan counties. The budget was determined by MoDOT design staff, that was then turned over to Herzog and the MoDOT field staff personnel who partnered to successfully complete the project within the agreed upon guidelines. In the end, the budget was successfully kept within 3% of the original contract price of \$9 million, with all additional costs associated with a bonus provided for quality workmanship. Herzog met the established DBE/MBE/WBE goal of 4%, and continues to pursue new and creative opportunities for contractor diversity. MoDOT Job Special Provisions implemented a Safety Plan requirement with detailed parameters including PPE and job hazard analysis. In addition, much of the project was completed at night to lessen the impact on the traveling public, with crews working six days per week to meet the deadline.



JOURNEY CHURCH INTERNATIONAL

Fogel-Anderson Construction Co.

LEE'S SUMMIT, MO

The Journey Church International project illustrates the advantage of engaging the Contractor and the Architect early in the design process in order to achieve the goals of the Owner. The Fogel-Anderson Construction team was engaged by Journey Church to work with the Mantel-Teter Architecture team early in the design phase in order to ensure that the new church encapsulated all of the space requirements that would serve the needs of the growing congregation in a beautiful facility that meets their budget. The new church was designed and built to meet all of those goals. The design also allows for future expansion as the congregation grows.



KANSAS CITY POWER & LIGHT – NORTH BUILDING

Neighbors Construction Co., Inc.

KANSAS CITY, MO

The Kansas City Power & Light North Building is an urban infill development located at the Southwest corner of 13th Street and Baltimore Avenue in downtown Kansas City, MO. The building features 81 luxury apartment units built around and on top of a 506 space pre-cast parking garage. This project presented multiple challenges at every turn. It began by discovering the buried, abandoned footings of 1930's era buildings and finished while battling winter weather by tenting and heating three hydro-mobile scaffolds in order to complete exterior cladding. Thanks to the creative problem-solving, relentless drive, and spirited teamwork of Neighbors Construction Co., NSPJ Architects and their consultants, and Northpoint Development, the end result of this project is a successful multi-family wood-framed residential building right in the heart of downtown Kansas City, MO.



KANSAS CITY POWER & LIGHT – TOWER BUILDING

Neighbors Construction Co., Inc.

KANSAS CITY, MO

Originally constructed in 1931, The Kansas City Power & Light Building is a stunning masterpiece of Art Deco architecture. The telescoping building wrapped in Indiana limestone is adorned inside and out with dazzling motifs representing light, radiance and energy. Completely restored with a sophisticated and stylish design, the building includes 210 luxury apartment units ranging from the 30th floor to the 3rd floor. These luxury apartments feature a wide range of custom high end finishes. Power & Light Apartments' residents enjoy resort-style amenities including a comfortable lounge, entertainment and game room, fitness center, whirlpool spa, dry sauna, and temperature-controlled wine storage. The 31st floor Beacon Lounge offers an elegant gathering space with soaring ceiling heights. Interior finishes include an elegant bar encased in Italian marble, elaborate trim and molding details. The restored outdoor terrace offers dazzling 360-degree views of Kansas City.



KANSAS CITY POWER & LIGHT BUILDING

Mike Hagen Electric, Inc.

KANSAS CITY, MO

In 1930, excavation began for what would be the tallest building in Missouri for 50 years! The structure was commissioned by the Kansas City Power & Light Company to house their many departments. The completed skyscraper rising over 475 feet encompassed 30 rentable floors of office space with a 97-foot tower consisting of 4 additional floors crowning the top. This distinctive Kansas City landmark, The Power and Light Building, was renovated to 210 residential luxury loft apartments with amenities including health club, media/game room equipped with private lockers for tenants' liquor, spa, massage rooms, lounge, swimming pool and a 500-space multideck parking garage. Additionally, the 1st and 2nd floor renovations were completed to create a 500-guest event space complete with new commercial kitchen, The Grand Hall at Power and Light.



KU HEALTH EDUCATION CENTER

JPI Glass

KANSAS CITY, KS

The University of Kansas Health Education Building is a 170 thousand square foot, \$82 million new construction project in the heart of downtown Kansas City. The project is a state of the art facility, comprised of a nearly 100% glass façade on the exterior of the building. The five-story structure features a simulation center, mock exam rooms, classrooms, and spaces for hands on learning. The school features a unique "building-inside-a-building" design and a glass sky bridge that connects the Health Education Building to the south part of campus. Due to the sheer size of glass used throughout the project, JPI implemented numerous innovative engineering controls in order to help set glass more efficiently and ergonomically, including investing in a SmartLift machine to manually lift and set glass. JPI overcame numerous logistical challenges to complete the project on time and on budget without sacrificing quality workmanship or jobsite safety.



LENEXA CIVIC CENTER

Westhues Electric, Inc.

LENEXA, KS

An ambitious idea that began in 1997 by a Lenexa city community action group to create a world-class mixed use government building with small businesses and public space became a reality in June of 2017. The Lenexa Civic Center is considered a generational investment to its citizens from the city. The new construction project consisted of a 4-story City Hall, 3-story Rec Center, 5-story parking garage, and an outdoor civic plaza. Within the project there was a public market, Park University, art gallery, government offices, auditorium, aquatic center, gym, and outdoor stage. Every detail in this project mattered, from coordinating with other trades to communicating the daily changes in the plans with everyone in the field. This project was a team effort and everyone had an important role in making the Lenexa Civic Center project a success.



MIDWEST FARMERS COOP RAIL SHUTTLE FACILITY

Wachter, Inc.

SYRACUSE, NE

Wachter, Inc. was awarded the design/build subcontracts for electrical & automation/controls for the Midwest Farmers Cooperative Rail Shuttle Facility that is located on the outskirts of Syracuse, Nebraska. Early on the value engineering process was highest priority. The project superintendent completed strategic planning for project layout and material procurement paving the way for many successes throughout the project. Wachter designed and installed Electrical & Automation for the following: Slip form concrete bins with a capacity of 1 million bushels, steel bin with a capacity of 750,000 bushels, tarped ground pile with a capacity of 1 million bushels, two receiving lanes with the impressive capabilities of dumping a 1,000 bushel truck every two minutes. Midwest Farmers construction expectations were exceeded as they reached their optimistic target, and were able to open and be ready for business on their receiving side for the harvest season and set new records for bushels handled.



NELSON COMPLEX WWTP HANDLING IMPROVEMENTS

Mega Industries Corporation

MISSION, KS

The Nelson Complex WWTP Handling Improvements Project was a much needed comprehensive system upgrade for one of Johnson County Wastewater's primary treatment facilities located in the heart of Mission, Kansas. The project was designed and constructed to enable the Nelson Complex to utilize its existing facilities to their full potential and allow for maximum efficiency of the wastewater treatment facility by upgrading the existing polymer, centrifuge, and conveyor system while also converting the existing digesters to an operational sludge holding tank with an entire new mixing system. This project was a unique combination of infrastructure and mechanical construction that also consisted of two new gravity thickeners, installation of an entire new sludge holding tank mixing system, a new dewatering polymer system, rehabilitation of the two site centrifuges, and upgrades to the associated mechanical, electrical, instrumentation and HVAC systems.



ORIZON AERO

American Boiler & Mechanical

LENEXA, KS

The installation of the new boiler and chiller along with necessary piping and system accessories was a critical part to Orizon's manufacturing process. The steam and chilled water piping was routed to 22 different tanks containing various chemicals that are heated and/or cooled depending on Orizon's customer's specifications. Over heating or over cooling one of the tanks could drastically change the chemical composition and ruin not only the chemicals, but also the aircraft subassembly section being processed. Attention to detail and selection of the right piping system components and accessories along with ensuring correct installation of parts was a must.

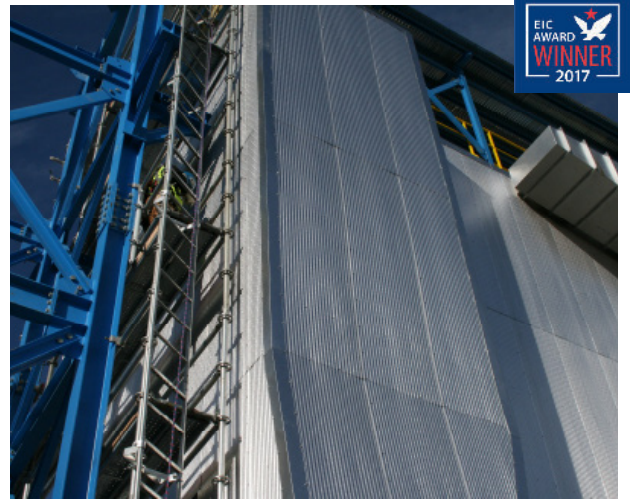


OWENS CORNING THERMAFIBER PROJECT

hth companies, inc.

JOPLIN, MO

hth companies, inc. was awarded a contract to perform insulation work for process equipment and ductwork for the Owens Corning Therafiber Project. The work consisted of installing insulation and aluminum jacketing on 50,463 square feet of new equipment and ductwork together with re-jacketing of ten pre-insulated vessels and 23 hundred lineal feet of piping. Additionally, hth companies provided scaffolding services and assisted in necessary repairs to modifications during the startup process. hth companies worked closely with the client and other trades to ensure scheduling and flow of work continued to meet the challenging schedule. By providing quality work in a safe, timely fashion, hth companies was awarded change orders totaling 45% of its original contract increasing manhours to 23,566.25 and one quarter and a total final contract amount of more than 1.2 million dollars.



OXFORD GRAND AT SHOAL CREEK SENIOR LIVING FACILITY

Crossland Construction Company, Inc.

KANSAS CITY, MO

The Oxford Grand at Shoal Creek Senior Living Facility is located in Kansas City, MO. The new living community was created to provide a resort-like ambiance for its residents. In addition to the Assisted Living quarters, The Oxford Grand also expands its services to include Memory Care Suites that cater to those who are experiencing the debilitating and progressive process of Alzheimer's Disease. Crossland Construction was pleased to serve the Owner as they sought to bring about dignified care for the elderly. This 70,745 square foot space presented our teams with the opportunity to merge the concepts of patient care and patient living. Innovative features include individual smoke compartments, combination fire sprinkler systems, areas of refuge for protection during high wind events, and an enclosed rooftop deck, to name a few. Despite numerous challenges, Crossland teams delivered a state-of-the-art facility to the Owners, caretakers, and residents of The Oxford Grand.



PICKWICK RENOVATION

HarenLaughlin Construction

KANSAS CITY, MO

The Pickwick Building was originally constructed in 1929 by the Pickwick Bus Line as a hotel, office tower, parking garage, and bus station terminal. It was later converted into subsidized housing and then sat vacant for about 7 years. The parking garage suffered structural decay over the years and was condemned as a parking structure. The 351,660 sqft complex covers three-quarters of a city block. The Pickwick Plaza renovation project consisted of re-purposing the office and apartment towers into 260 luxury apartment units and retail space and renovating the bus terminal into tenant amenity and retail space. The parking garage underwent extensive structural repair and is now open as parking garage for tenants. Additionally, The Pickwick building was restored per National Park Service Historic Restoration Standards. The total duration of the renovation totaled 22 months, and HarenLaughlin Construction self-performed 14% of the work.



PROPORTION FOODS

Lee Mechanical Contractors, Inc.

ROUND ROCK, TX

Lee Mechanical's relocation of the proportion foods plant from Los Angeles, California to Round Rock, Texas, included the USDA & FDA certified food processing equipment, installation, modifying and adapting utility systems shipped with the relocated process equipment to function in the new facility. As well as furnishing, fabrication, and installation several thousand feet of process utility piping including, but not limited to: 8" natural gas; high pressure-high temperature water steam; steam condensate; sanitizing chemicals; compressed air; process exhaust; and a waste water treatment system. The 70,000 square foot process facility was to be outfitted with full wash-down capabilities at a cost of 1.8 Million dollars, the project was completed on-time over a 6 month period. Lee Mechanical self-performed 100% of the mechanical installation and subcontracted the mechanical insulation to fellow ABC member IC&E. Lee Mechanical is proud to have completed the project without any lost time, restricted or recordable accidents.



RAYMORE-PECULIAR HIGH SCHOOL ADDITION AND RENOVATION

Crossland Construction Company, Inc.

PECULIAR, MO

Campus overcrowding had become a debilitating reality for the students and staff of the Raymore-Peculiar High School. Out of options and with an unstoppable annual growth in student population, the district proposed a school bond issue to alleviate the strain. Community residents turned out in droves to support the program improvements to the tune of \$27 million in funding. With extensive experience in building educational facilities and a reputation for excellence and timely delivery, Crossland Construction Company was selected for the high school project. An additional 104,000 square feet was added to the current facility, and 90,000 square feet of the existing space was renovated. Today, the school measures 270,000 square feet and is home to high school students grades nine through twelve.



THE SHERIDAN AT OVERLAND PARK

Excel Constructors, Inc.

OVERLAND PARK, KS

The Sheridan at Overland Park is a 98,860 square foot, steel-framed, three-story, assisted living and memory care facility at City Place located in Overland Park. This facility features 116 apartment homes with a variety of distinctive floor plans spanning the space of three floors, each with its own dining space, activity areas, and living rooms. The living facility also consists of an art studio, a fitness center, a salon, and physical therapy spaces. This new assisted care facility will help fulfill the mission of the Kansas senior community at The Sheridan at Overland Park by providing a lifestyle that fosters independence, actively engages the mind, invigorates the body, and nurtures the spirit while offering families and their loved ones the peace of mind they deserve.



SOUTH LAWRENCE TRAFFICWAY

Emery Sapp & Sons, Inc.

LAWRENCE, KS

The South Lawrence Trafficway project included the construction of a new six-mile stretch of four-lane freeway and the creation of more than 300 acres of new wetlands. The freeway realigned the existing K-10 highway, alleviated congestion on the streets of Lawrence, and created a southern bypass loop around the City. The Emery Sapp & Sons (ESS) team was challenged by extreme geotechnical conditions and rigorous schedule and production level requirements. ESS developed an unparalleled combination of resources, technology and eco-conscious production innovations to overcome such challenges. Within a span of 3 years, ESS constructed 21 bridges, 22 reinforced boxed culverts, moved nearly 4 million cubic yards of earth, stabilized more than 750,000 cubic yards of earth, and paved half a million square yards of concrete to deliver above, and beyond, expectations. The new \$138 million freeway was the largest single project in KDOT's history and is projected to create a regional economic benefit that could reach \$4 billion.



TURNER COMMERCE CENTER & AMAZON FULFILLMENT CENTER

Emery Sapp & Sons, Inc.

KANSAS CITY, KS

The new Amazon Fulfillment Center serves as a new key facility in the e-commerce giant's Midwest regional supply chain. The Amazon Fulfillment Center is a \$300 million, 2.3 million square foot distribution center, located on a 133-acre site at Interstate-70 and Turner Diagonal in Kansas City, KS. As the project's construction manager, Clayco, Corp. partnered with Emery Sapp & Sons to provide a civil speed-to-market solution for Amazon. The ESS team was challenged by engineering modifications, inclement weather conditions, and rigorous schedule and production level requirements. ESS developed an unparalleled combination of resources, technology and production innovations to overcome such challenges. Within a span of 15 months, ESS mobilized a full-stack fleet of equipment and on-site batch plant, moved nearly 1.2 million cubic yards of earth, and paved more than 96,000 square yards of concrete pavement.



UNIVERSITY ACADEMY ATHLETIC FIELD

Straub Construction Company

KANSAS CITY, MO

Straub Construction is proud to have recently completed a state-of-the-art athletic field and support facilities for University Academy in Kansas City, MO. The new facility includes a multi-sport artificial turf field, press box, scoreboard, two new multipurpose buildings and grandstands with seating for 1,200. The new field will be used for football, track, baseball, soccer, band and PE classes. Shirley Helzberg and the University Academy Foundation made this project possible, as well as a grant received from the NFL. The Owner, Design Team and Straub Construction worked around several issues to squeeze this facility onto the existing school grounds. Fortunately, all the hard work paid off and the final product is a beautiful facility that the whole community can be proud of. Straub Construction teamed with Hollis+Miller Architects, Smith & Boucher Engineers, Shafer, Kline & Warren inc., VSR Design, and Lacy & Company to make this project possible.



UNIVERSITY OF MISSOURI COLUMBIA SOFTBALL STADIUM

Thermaltech, Inc.

COLUMBIA, MO

Thermaltech, Inc. was contracted by ABC member, J. Louis Crum Corporation of Columbia, Missouri to self-perform the insulation work on all plumbing and HVAC systems as well as equipment for the New Softball Stadium at the University of Missouri Columbia. The 17.5 million dollar stadium replaced the existing 35 year old stadium. Due to the accelerated work schedule, Thermaltech was required to complete over 90% of its contracted work in two months. Winter weather, elevated working platforms, and multiple trades working in close proximity were only a few challenges Thermaltech overcame. Materials had to be ordered prior to field verification to ensure they would arrive in time. Change orders were issued throughout the project increasing the scope of work, but no additional time was granted. An experienced superintendent with a clear vision of the project was able to continuously adjust manpower and complete the project on time and under budget.



VETERANS OUTREACH CENTER

Teague Electric Construction, Inc.

KANSAS CITY, MO

The Veterans Outreach Center is a project that entailed the remodeling of a 7,000 square foot abandoned auto parts shop and turning it into a unique working space to benefit area veterans. Repurposed materials, new electrical components, energy efficient lighting and retractable drop down cords resulted in a space that is practical and functional. Teague Electric was able to maintain safety throughout the project for the workers, volunteers and the veterans. Teague Electric also took the initiative to procure many of the materials from various vendors at no cost, saving the project over \$13,000, and finished the project within 4 weeks, just in time for their Grand Opening!



VISTA 154 AT IRONHORSE

Excel Constructors, Inc.

LEAWOOD, KS

Located just west of the state line between Missouri & Kansas, Ironhorse is considered one of the top public golf courses in the Kansas City Metro. Ironhorse Golf Club's new 5,400 square foot banquet and meeting space, called Vista 154, is located next to the existing clubhouse. The expansion seats up to 225 guests and overlooks the picturesque second hole of the golf course. The space includes a large deck, a beautiful fireplace and a banquet room with state of the art audio-visual amenities. The project consists of timber frame construction with elevated structural concrete and GLU Laminated Beams providing the support for the new structure with an open cart path and storage below.



2017 EXCELLENCE IN CONSTRUCTION EVENT SPONSORS

BRONZE SPONSORS

Acton Mobile
 Constangy, Brooks, Smith & Prophete, LLP
 PlanGrid

SILVER SPONSORS



GOLD SPONSORS

